

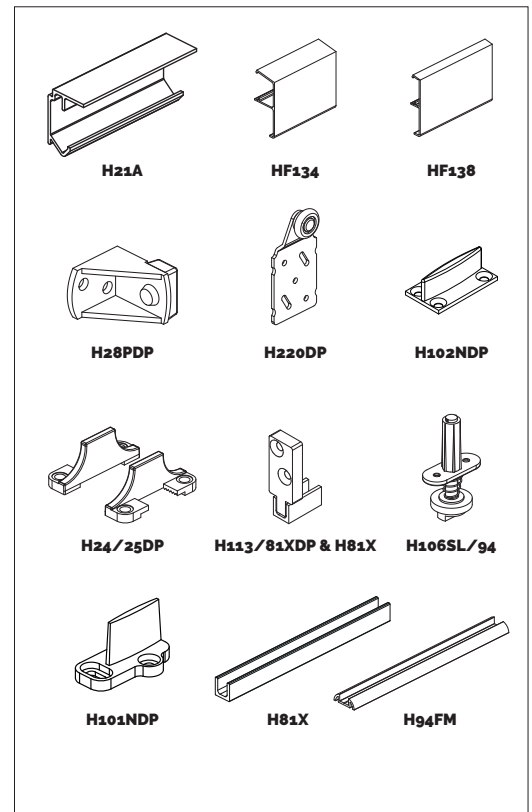
SINGLE TOP

HENDERSON

For single track sliding wardrobe doors. Max 45kg.

APPLICATION

- For timber framed composite doors
- Silent – nylon wheeled ball bearing hangers and aluminium track
- Easily adjusted door height
- Alternative guide channel systems available



HARDWARE SPECIFICATION		
Track	H21A	Aluminium (3000mm length)
Hangers (2 per door)	H220DP	Outer offset hanger. Nylon tyred wheel face fitted to the back of the door.
Door Stop	H28PDP	Rubber-buffered stop
Guides	H24/25DP	Nylon adjustable guide set. Included in sets and packs. Alternative guides available.
Accessories		
Guides	H101NDP	Nylon saw cut guide
	H102NDP	Nylon saw cut guide
	H106SL/94	Spring loaded guide (suits H81X channel & H94FM channel)
	H113/81XDP	Nylon guide (suits H81X channel)
Channels	H81X	Aluminium channel (2400 & 3600mm lengths)
	H94FM	Aluminium channel (2000, 3000, 4000 & 6000mm lengths)
Pelmet	HF134/#	Fascia for soffit fixed applications for doors up to 38mm thick
	HF134/ECP	Fascia end cap pack
	HF138/#	Fascia for soffit fixed applications for doors up to 20mm thick
	Note: Replace # with 2000, 3000 & 4000mm lengths. All fascia anodised finish	

DOOR SPECIFICATION	
Track System	Single Top
For Individual Doors:	
Max Door Weight	45kg
Max Door Width	900mm
Door Thickness	16-40mm
Max Door Height	2400mm

STANDARD SETS AND PACK			
Sets comprise of jump-proof, face/soffit fixing aluminium section track, ball bearing hangers, nylon guides, rubber-buffered stop, all screws and fitting instructions			
Set No.	Opening width	Track Length	Hardware for
HST12	600mm	1200mm	1 door
HST15	750mm	1500mm	1 door
HST18	900mm	1800mm	1 door
Pack No.	Application		
HST01DP	Single door fittings pack		

SINGLE TOP

**DRAWING IS
NOT TO SCALE**

